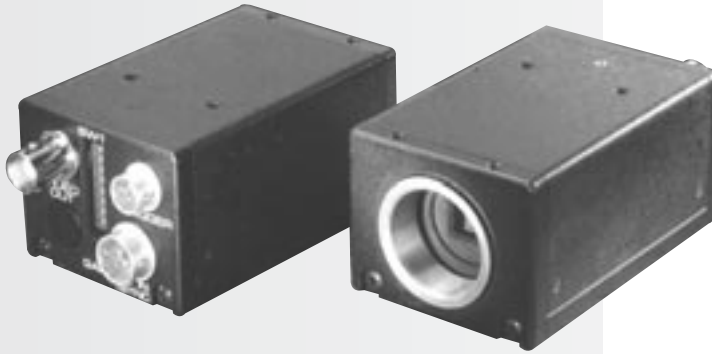




MODEL SI-M310A

PROGRESSIVE SCAN
MONOCHROME CAMERA
NORMAL AND DOUBLE
SPEED SELECTABLE



FEATURES

- Progressive scan monochrome 1/2" CCD Camera
- Normal speed and double speed selectable by RS232
- CCIR and EIA versions, EIA compatible with VGA format at normal speed
- High resolution - 600 TV Lines
- Single pulse trigger, double pulse trigger, pulse width control trigger, frame delay mode selectable
- Long time Integration two field to infinity
- Internal, external HD/VD or random trigger synchronization
- Operating mode setting by Dip Switch or RS-232 Interface

Our people make a difference.

Choice. Value. Service.

1045 Armando Street Suite C, Anaheim, CA 92806
Phone 714.630.0688 • Fax 714.630.0788 www.costarimaging.com

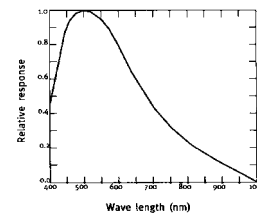
MODEL SI-M310A

Specifications for SI-M310A

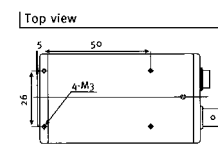
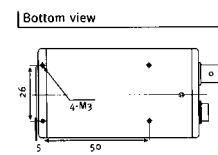
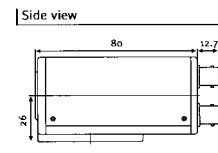
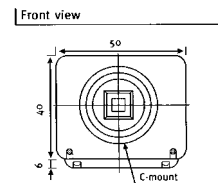
Specifications	SI-M310A-EIA	SI-M310A-CCIR
CCD sensor	Monochrome 1 / 2 " IT Progressive CCD	Monochrome 1 / 2 " IT Progressive CCD
Chip size	7.48 mm(H) x 6.15 mm(V)	7.48 mm(H) x 6.15 mm(V)
Picture elements(effective)	659 (H) x 494 (V)	782 (H) x 582 (V)
Cell size	9.9 μm (H) x 9.9 μm (V)	8.3 μm (H) x 8.3 μm (V)
Scanning	2 : 1 Interlace or Progressive scan	
Pixel clock frequency	Normal speed: 12.2727 MHz Double speed: 24.5454 MHz	Normal speed: 14.75 MHz Double speed: 29.50 MHz
Line frequency	Normal speed: 15.734 KHz Double speed: 31.468 KHz	Normal speed: 15.625 KHz Double speed: 31.25 KHz
Frame rate	Normal speed: 30 frames / sec. Double speed: 60 frames / sec.	Normal speed: 25 frame / sec. Double speed: 50 frame / sec.
Min. illumination	Normal speed: 0.1 Lux @ F1.4, AGC on Double speed: 0.2 Lux @ F1.4, AGC on	
S / N ratio	> 56 dB	
Gamma	0.45 or 1.0	
Gain	Auto /Manual /Factory preset or RS 232C control	
Video output	Composite 1 V p-p @ 75 Ω	
Synchronization	Internal X -tal , External HD / VD, or Random trigger	
HD/VD sync input/output *	4 V p-p @ 75 Ω or TTL	
Trigger input	TTL	
WEN output	TTL	
Pixel clock output	TTL	
Trigger modes	Single trigger, Double trigger, Long time exposure, Pulse width control, Frame delay mode	
Shutter speed	Normal speed: 16 steps, 1/30 sec. To 1/ 800,000 sec. Double speed: 16 steps, 1/60 sec. To 1/1,600,000 sec.	Normal speed: 16 steps, 1/25 sec. To Double speed: 16 steps, 1/50 sec. To
Long time exposure	2 field to ∞	
DIP switch function	Shutter speed, Gain, Pixel clock output, H reset, Gamma, etc.	
RS 232C function	Gamma, H reset, Pixel clock output, Gain, Normal / Double speed, HD/VD/WEN/Trigger pin configuration, 75 Ω on/off	
Lens mount	C - mount	
Operating temperature	- 5° C to + 45° C (23° F to 113° F)	
Storage temperature	- 25° C to + 60° C (- 13° F to + 140° F)	
Humidity	20% to 80%, non-condensing	
Dimensions	40 (H) x 50 (V) x 80 (D)mm, (1.58 x 1.97 x 3.15 inch)	
Weight	245 g	

Note: * option by internal setting

Spectral Sensitivity



Dimensions



Design and specifications subject to change without notice.

Conversion: 1" = 25.4mm
Measurement conversions are approximate



1045 Armando Street Suite C, Anaheim, CA 92806
Phone 714.630.0688 • Fax 714.630.0788
www.costarimaging.com

Distributed by