

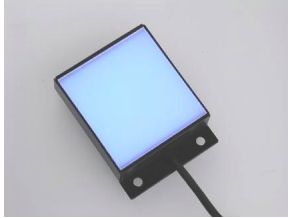
## LED RINGLIGHT



PART No	ID	OD
E22015	15(0.59)	30(1.18)
E22020	20(0.79)	40(1.57)
E22025	25(0.99)	40(1.57)
E22028	28(1.1)	45(1.77)
E22032	32(1.26)	50(1.97)

PART No	ID	OD
E22040	40(1.58)	70(2.76)
E22050	50(1.57)	80(3.15)
E22060	60(2.36)	91(3.58)
E22070	70(2.75)	100(3.94)
E22080	80(3.15)	110(4.33)

## LED BACKLIGHT



PART No.	EFFECTIVE AREA
E22250	25 x 25 (1 x 1)
E22380	38 x 38 (1.5 x 1.5)
E22550	51 x 51 (2 x 2)
E22760	76 x 76 (3 x 3)
E22101	101 x 101 (4 x 4)

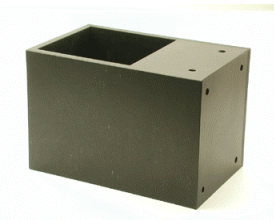
## LED BARLIGHT



PART No	LENGTH
E22420	50 (2.00)
E22435	80 (3.15)
E22445	100 (4.00)

ANY LENGTH UP TO 2000MM (79")

## LED AXIAL LIGHT



PART No	EFFECTIVE AREA
E23028	26 x 26 (1 x 1)
E23038	38 x 38 (1.5 x 1.5)
E23041	43 x 43 (1.75 x 1.75)
E23050	50 x 50 (2 x 2)
E23062	62 x 62 (2.5 x 2.5)
E23075	75 x 75 (3 x 3)
E23100	100 x 100 (4 x 4)

## 4 SIDE MULTI AXIS LIGHT



PART No	APERTURE	EXTERNAL SIZE
E226020	20 x 20	52 x 52
E226030	30 x 30	65 x 65
E226045	40 x 40	79 x 79
E226050	50 x 50	101 x 101
E226070	70 x 70	120 x 120

Customized on request

Volt: 12V, 24V, others, strobing

Color: Red, Blue, Green, Orange, White, near IR

Sizes: Various sizes

## LED POWER SUPPLY



Potentiometer control, P, 5W max  
Voltage control, V  
Current control, I  
Digital voltage control, DV  
Digital current control, DI  
Pulse Width Modulated, PWM

PART No	VOLTAGE	POWER
E25022	12V	20W
E25024	24V	20W
E25052	12V	50W
E25054	24V	50W

## LED STROBE CONTROLLER



Trigger: TTL +/-, Relay on/off

Pulse Width: 25, 50, 75, 100, 300us+/- 5us  
x 1, x 10, x 100, x 300

DC input: 12V to 80V

Output to LED=input to strobe controller

Specifications are subject to changes without notification.